

# Innovative Medical Solutions

SUPPORTING THE SURGICAL & MEDICAL PROFESSION

## Electronic Ear Irrigation

Announcing  
the arrival of  
the ProJet 101  
in Australia



**ProJet**

**The New Standard in Electronic Ear Irrigation**

Unit 8, 9 Merino Entrance, Cockburn Central,  
Western Australia, 6164

Tel: 1300 884 612

Email: [sales@innovativemedical.com.au](mailto:sales@innovativemedical.com.au) Web: [www.innovativemedical.com.au](http://www.innovativemedical.com.au)

Outstanding  
value



#### Features:

- Power/ water pressure control button
- Water pressure indicator

#### Ear Irrigation kit consists of:

- Irrigator machine
- Water dispensing handle
- Water reservoir
- 10 ear irrigation tips
- Tip/ instrument storage
- Mains power cable and plug
- Foot switch

#### Specifications:

- Power: 230V, 50Hz
- Static pressure: 0.25 - 3 bar maximum
- Working time: 2 - 3 mins for 500cc
- Continuous usage: 8 mins
- Reservoir: 500ml
- Temp range: 5°C - 35°C
- Pressure: 860 - 1060 hpa
- HxWxD: 180x175x145mm

Utilising the most modern production methods the Guardian Projet 101 was designed to fulfil the most demanding surgeries and hospital ward requirements for a reliable, leak free and easy to use machine that is not expensive to run and does not require constant maintenance and subsequent down time.

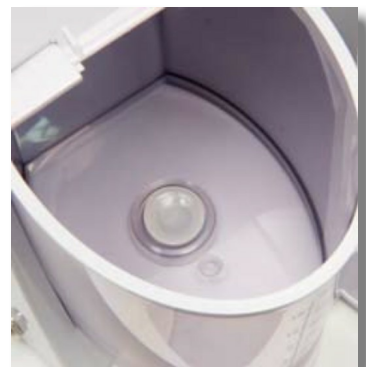
The P101 has many unique features designed to help the busy surgery such as:

- 1 Extra long mains lead and handle hose so machine can be sited where it is most convenient
- 2 Integral wall mount frees up valuable work space by wall mounting the Projet™ however easily removed for cleaning etc
- 3 Sliding flow regulator conveniently mounted in handle. Water flow can be temporarily stopped by sliding regulator to off position or flow regulated by sliding control to desired position
- 4 Ultra thin atraumatic tips help visualisation and direction of water flow
- 5 Digital control of water pressure and flow is easy to operate and remains constant and reproducible
- 6 Flat control panel is easy to keep clean
- 7 Tips held securely yet very easy to remove and replace
- 8 On board tip and/or instrument storage
- 9 Quiet operation
- 10 Oversize water reservoir silicone washer to reduce incidence of leaks
- 11 Economically priced

#### Water dispensing handle



#### Water reservoir



Proj<sup>et</sup>